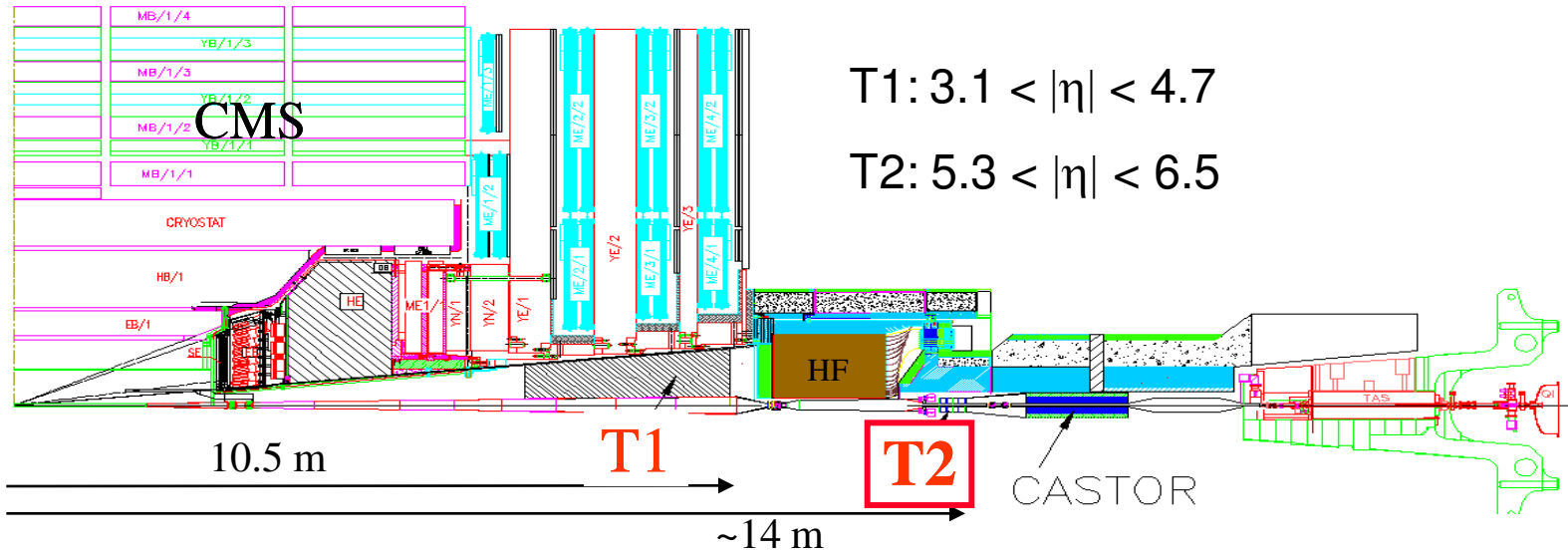


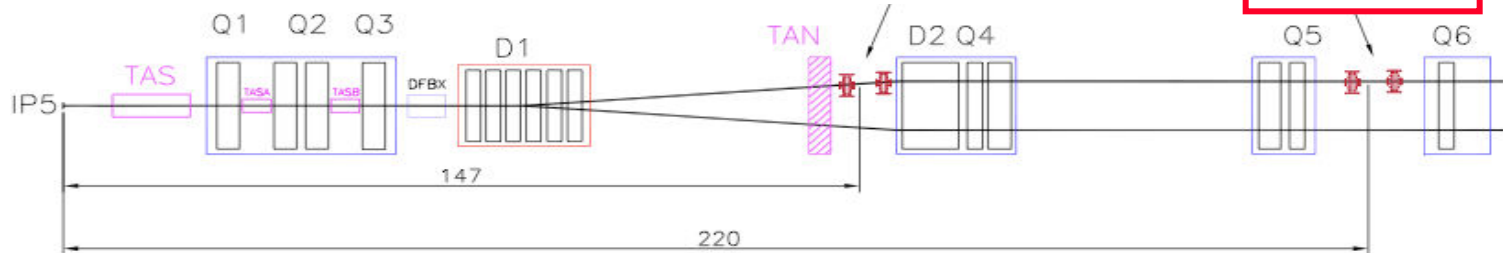


First Results from the LHC Runs 2009

Very Preliminary



Roman Pots:



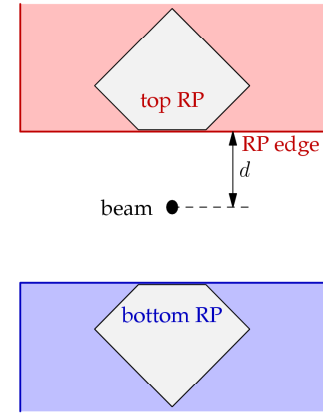
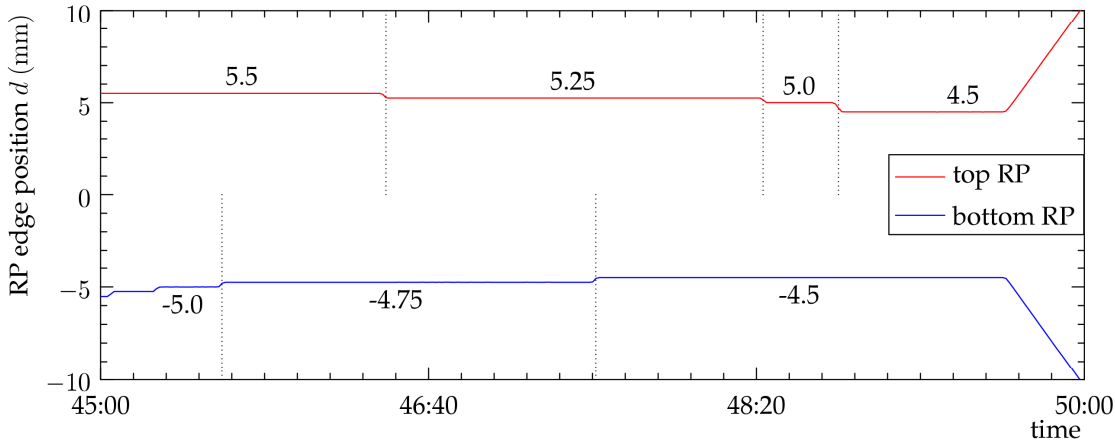
on behalf of the **TOTEM** Collaboration

<http://totem.web.cern.ch/Totem/>

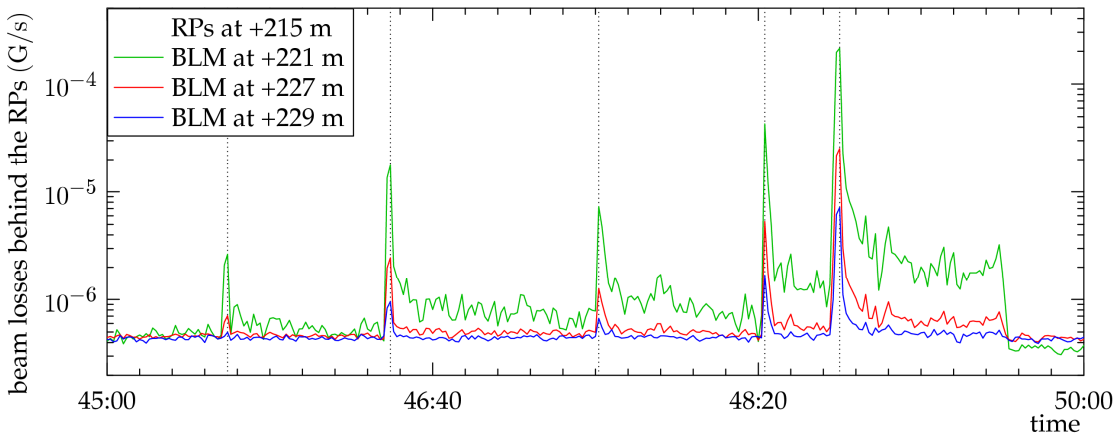


First Movements of the Roman Pots Towards the LHC Beam

The edge of the Roman Pots (RPs) approaching vertically the beam.



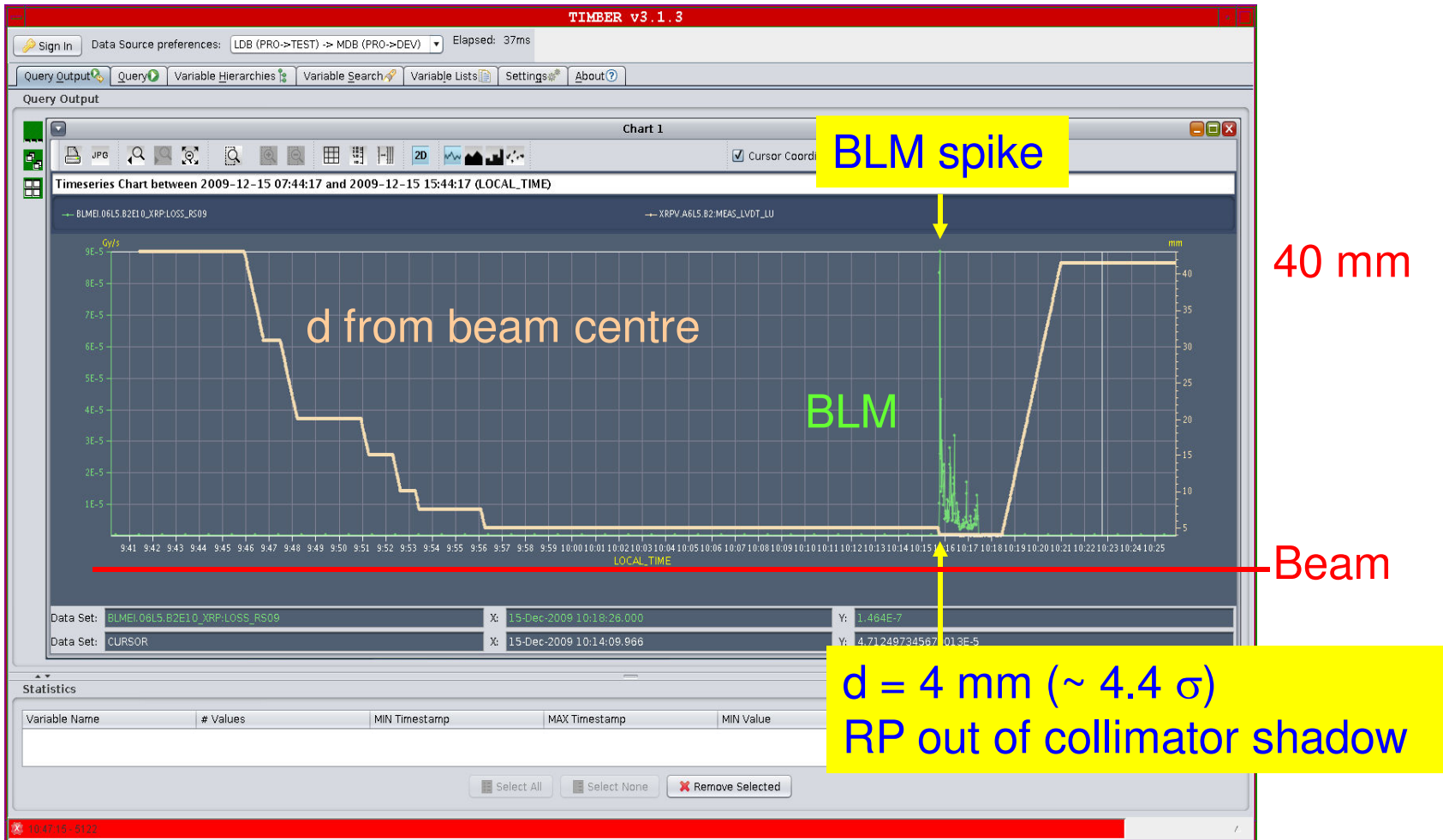
The beam losses induced by the RP movements, measured by several beam loss monitors (BLMs).



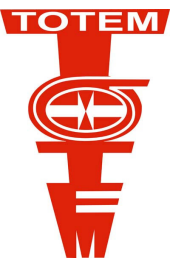


Data Taking with one Roman Pot

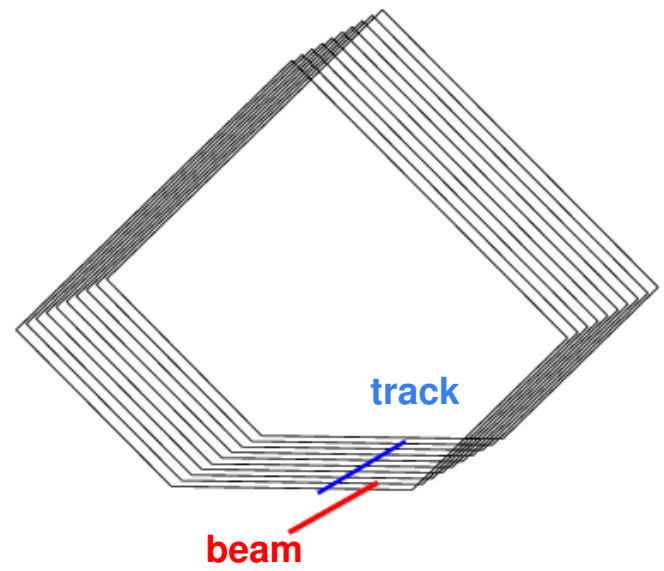
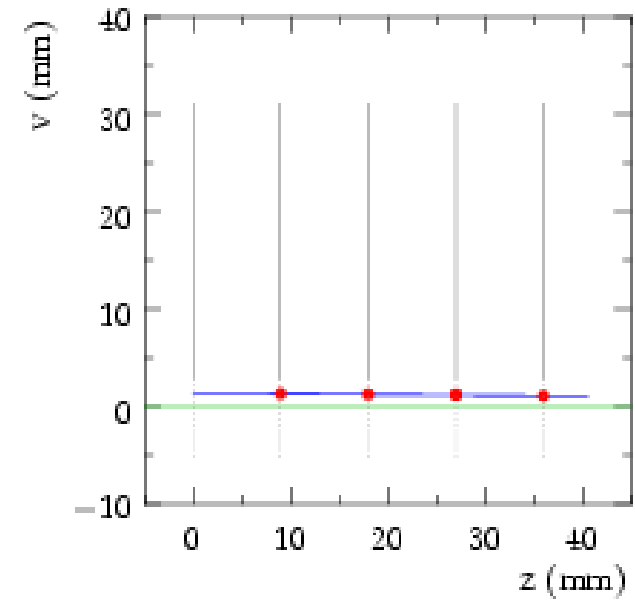
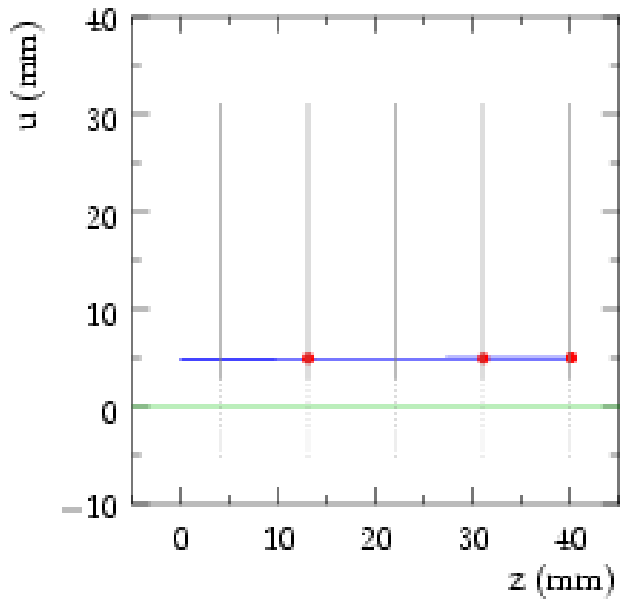
Move Roman Pot towards the beam center



Screen shot from the LHC Control Center



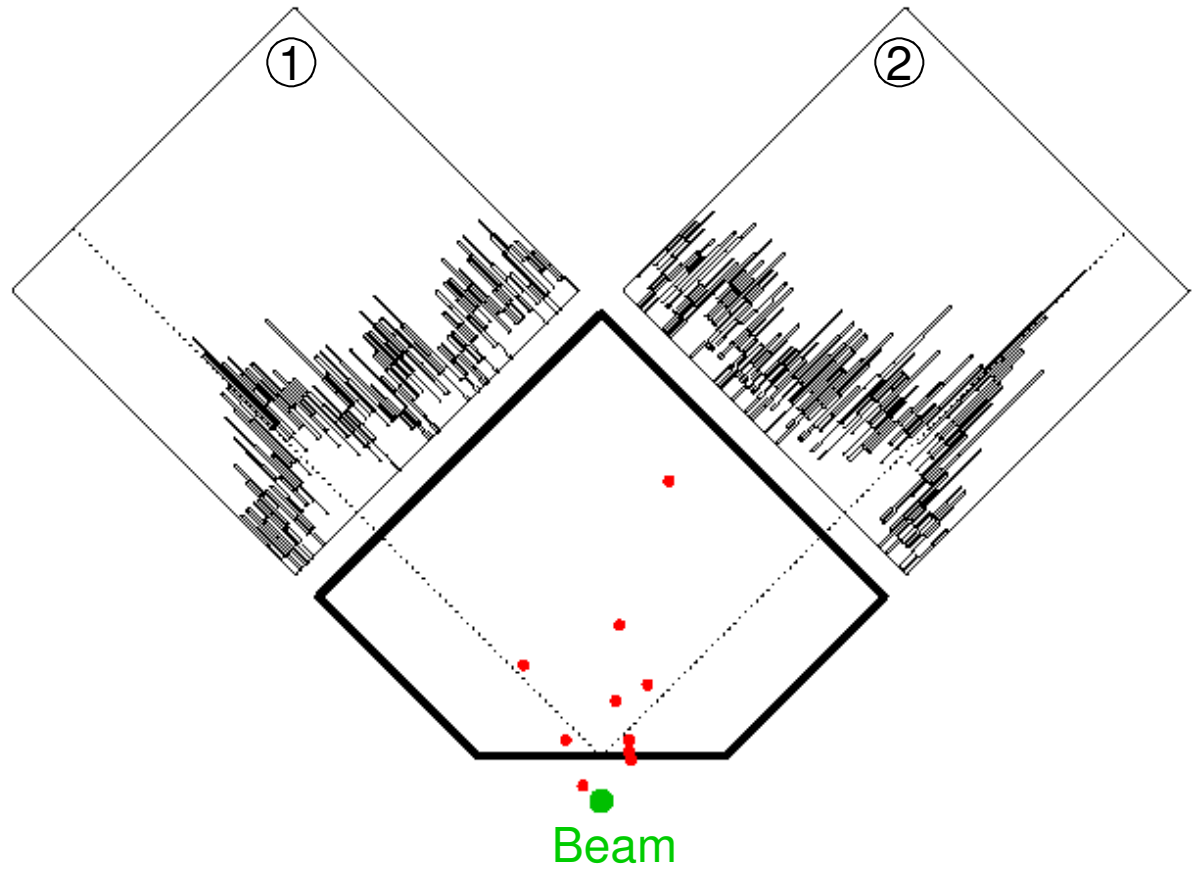
First Proton Track in the RP Detectors



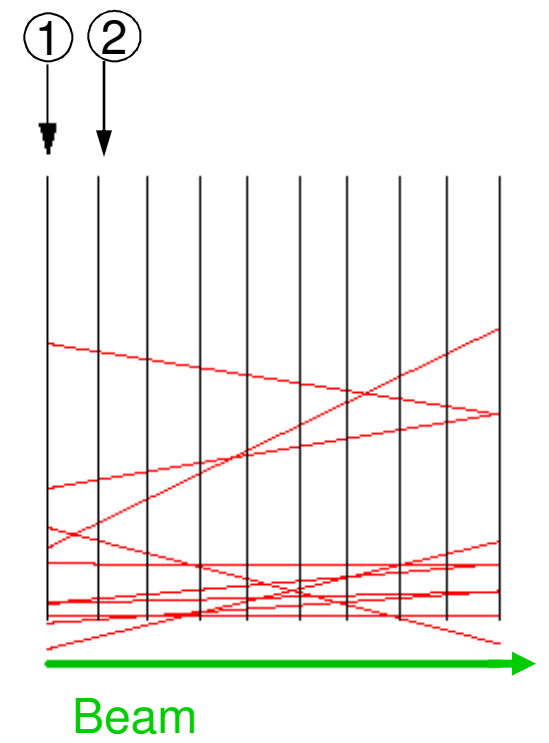


Hits and tracks in the Silicon detector

Transverse view on first 2 detector planes



Side view on detector planes

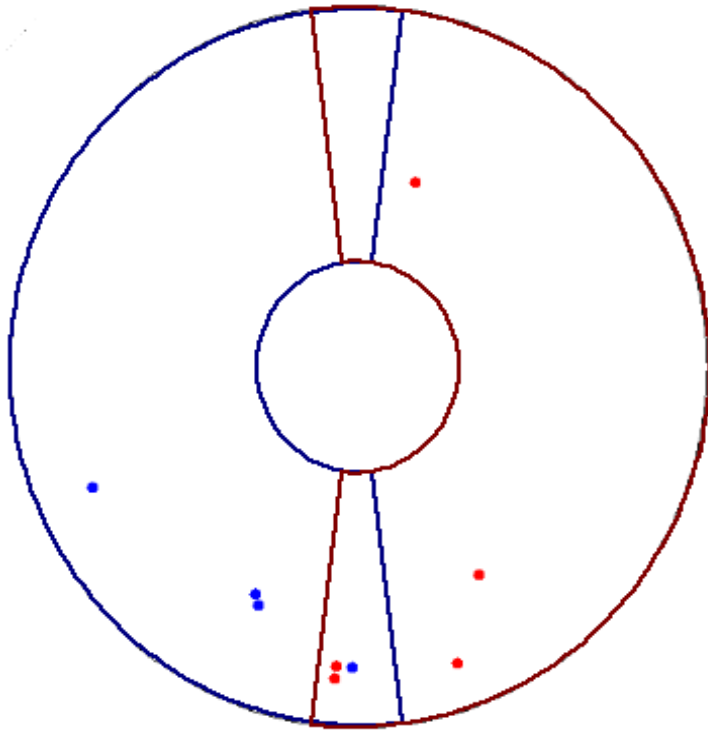




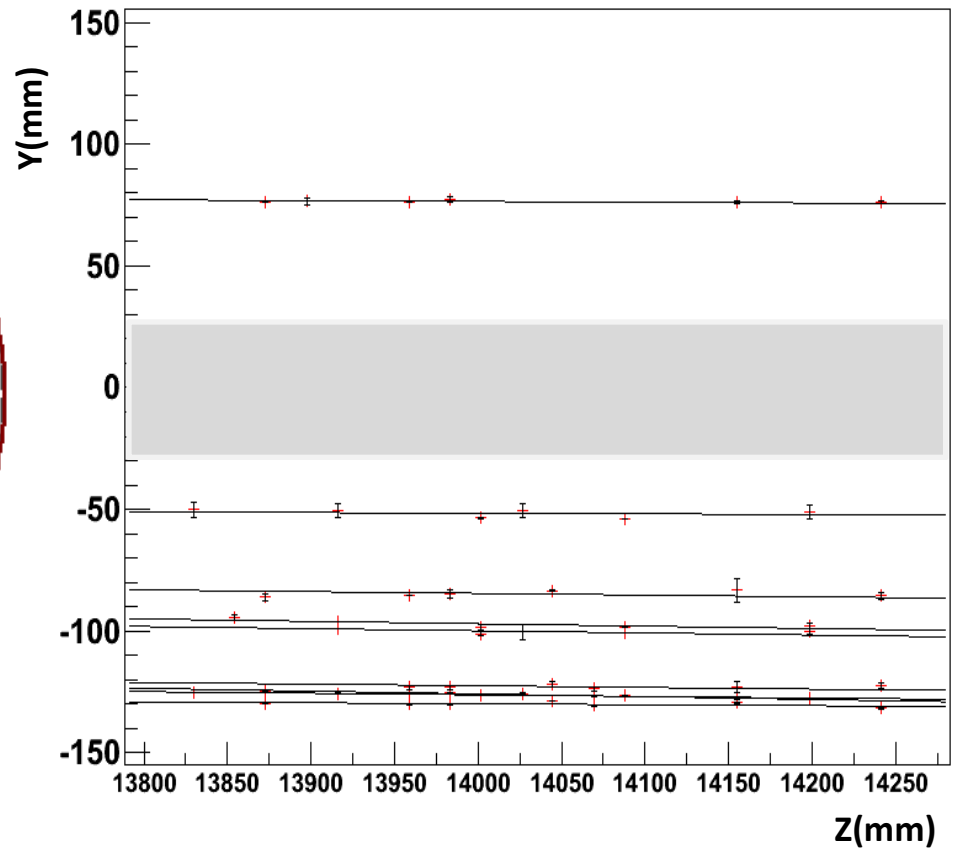
First Tracks in the Very Forward T2 Telescope

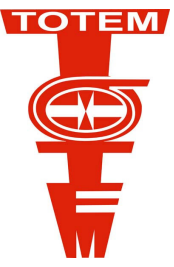
Event taken at 2.36 TeV

Reconstructed tracks in R- Φ Plane



Tracks Y-Z Projection

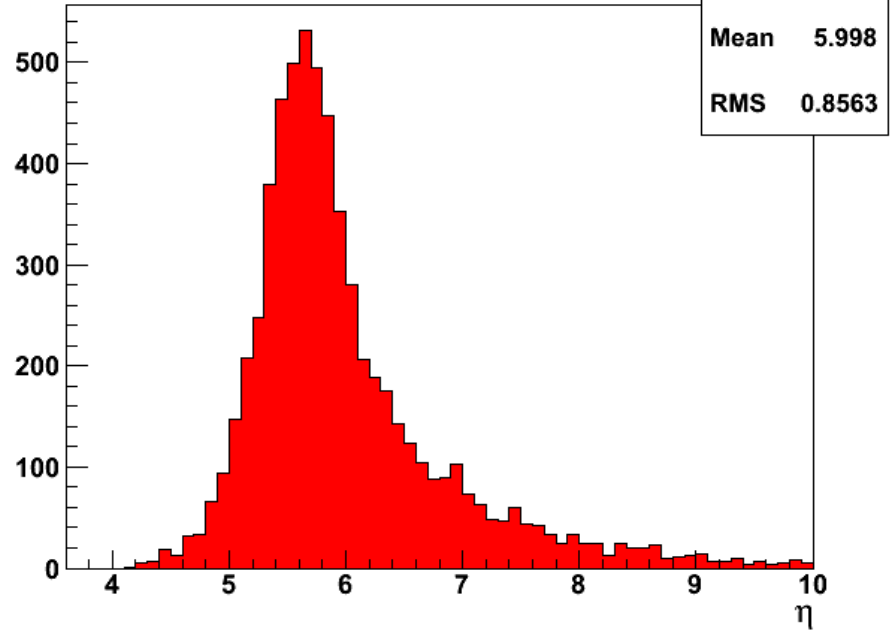




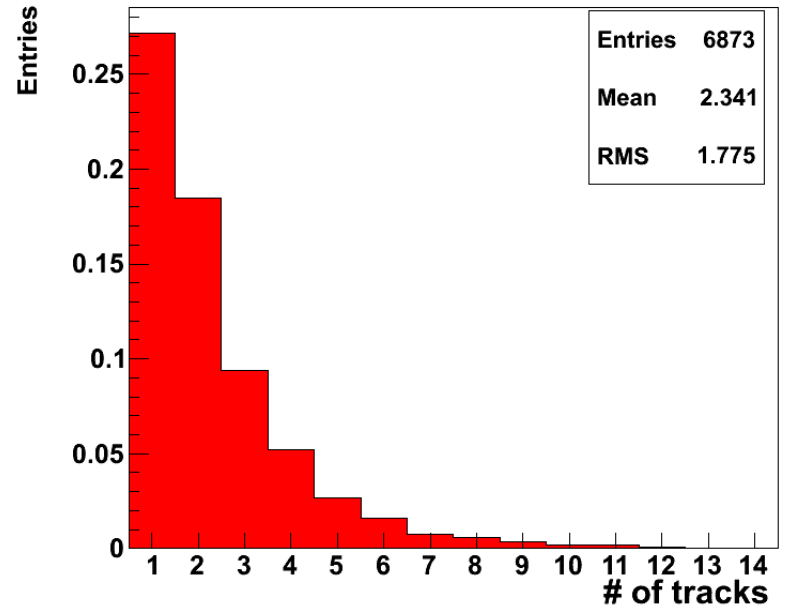
Pseudorapidity and Multiplicity Distributions

very preliminary

Track η distribution (no cuts)



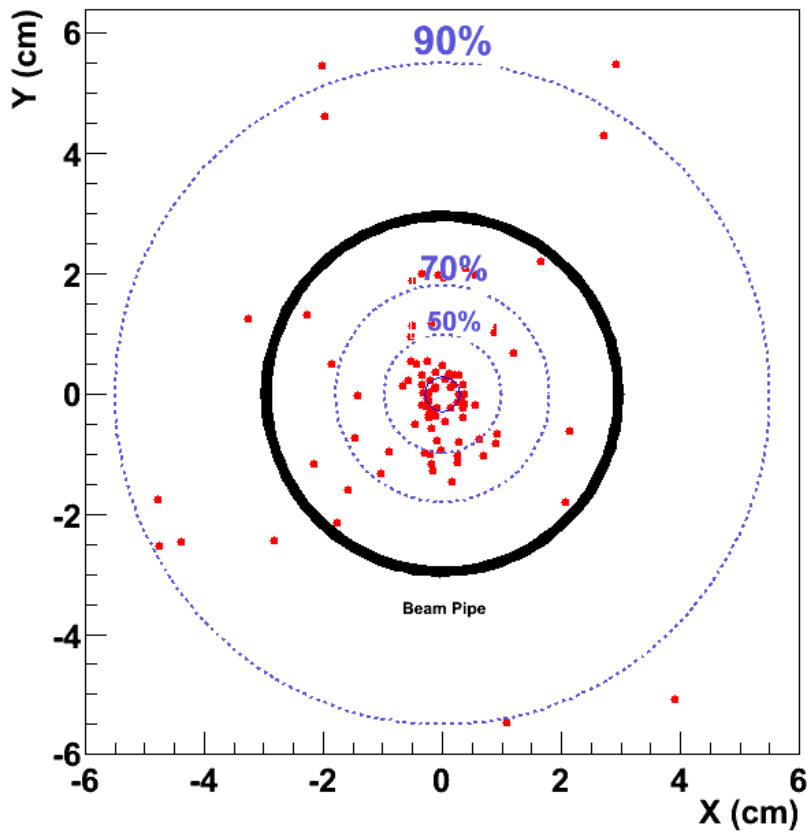
Number of tracks (no cuts) per event 2360 GeV per T2 quarter



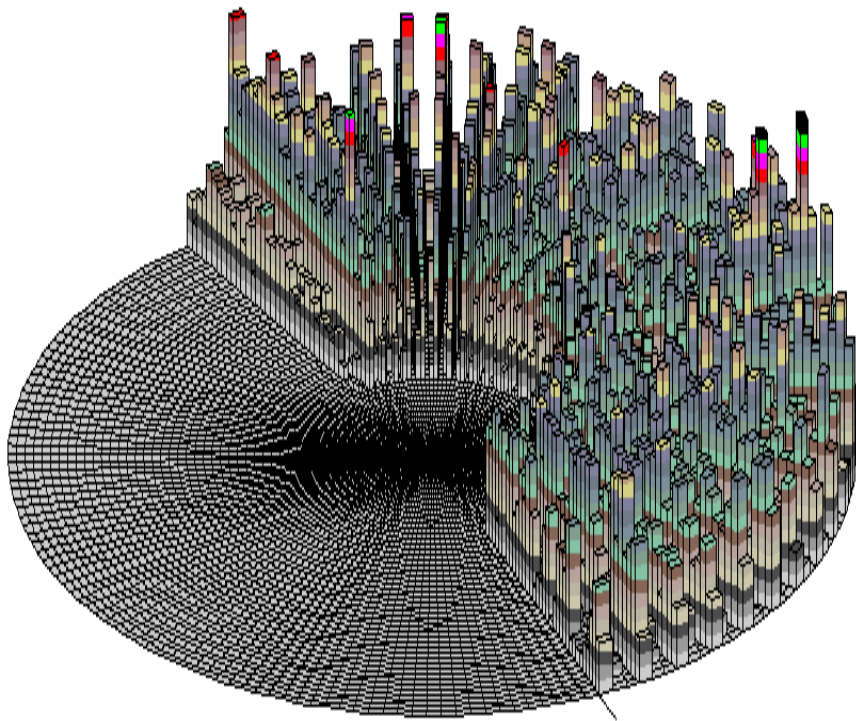


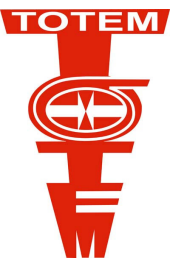
Vertex Reconstruction and Hit Map

Reconstructed Vertex X-Y position



Hit distribution in one detector plane





**Many thanks to the LHC crew for the
marvellous start**