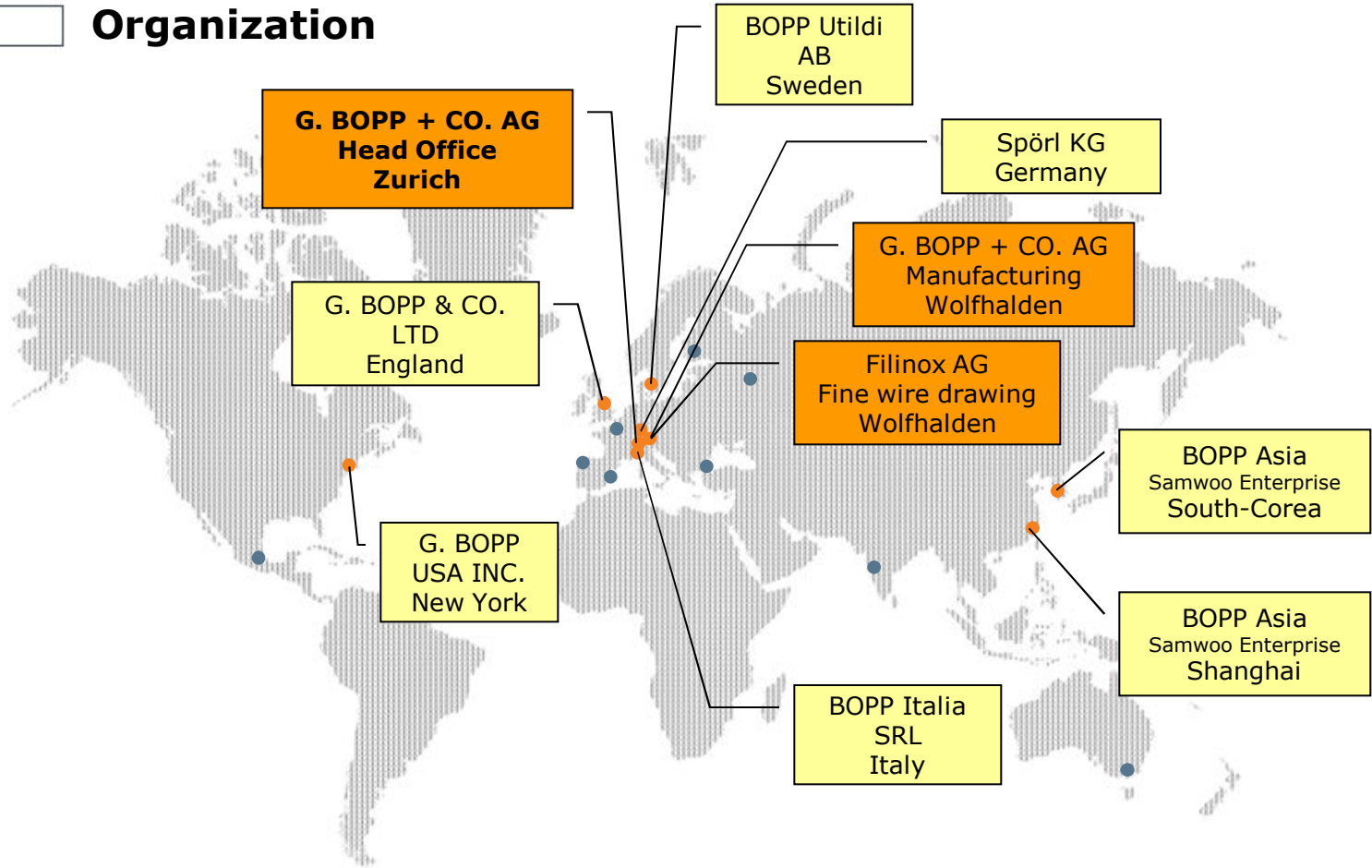


## **BOPP - The Art of Swiss Precision**

Swiss precision woven fine wire cloth for applications worldwide



## Organization

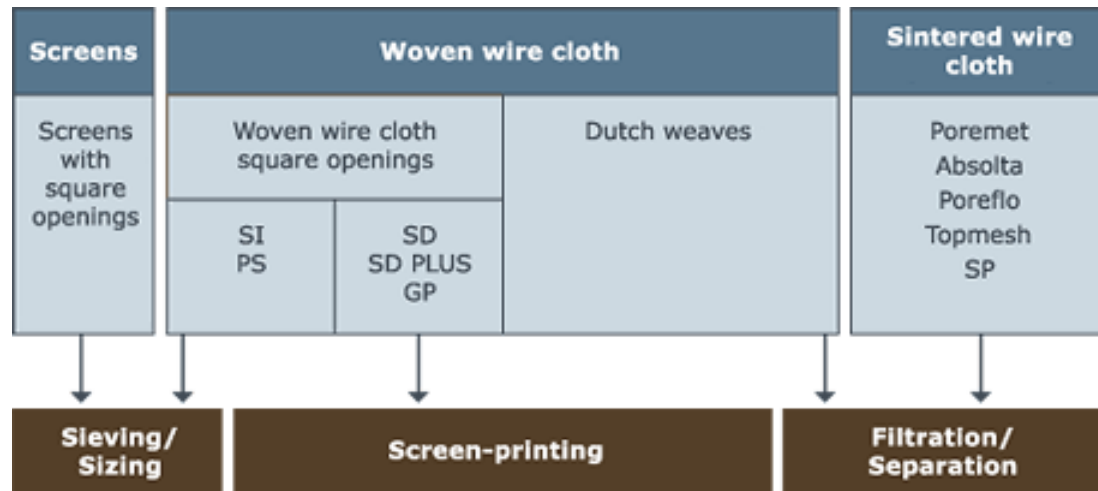
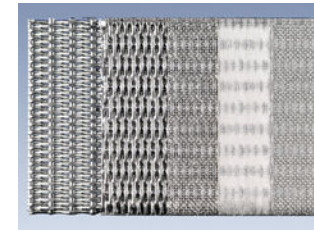
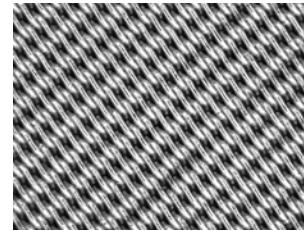
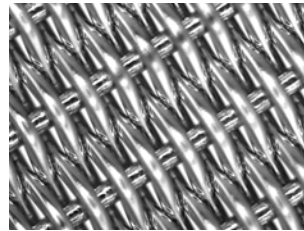
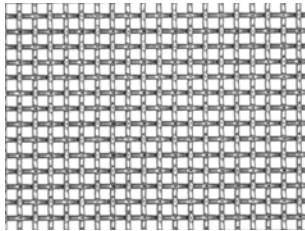


## The Company at a Glance

Employees:	200 in Switzerland, 400 worldwide
Turnover:	50 Mio. CHF (Bopp), 90 Mio. CHF consolidated
Production:	70% of total Output in Switzerland 85% exported
Metal Volume processed:	170 tons/year
Wire Threat processed:	17'500'000 KM/year
Mesh manufactured	340 KM/year
Finest Wire woven	0.015 MM



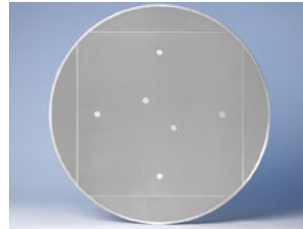
## Products and Applications



## Typical Applications of our Customers: Filtration, Sieving



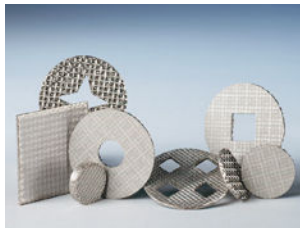
■ Cylindric Filter Cartridges



■ Laser cut sintered parts



■ Framed Mesh



■ Parts framed by synthetic material

■ Test Sieves



■ Elements for Fluidisation

■ Purification Baskets, Sieves

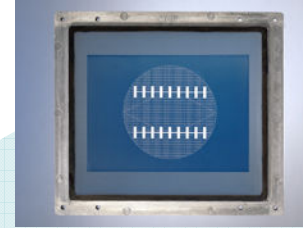


■ Nutsch-Type Filters



## Applications in Screen Printing

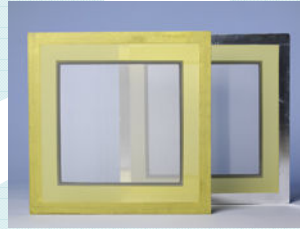
### Glass Printing



### Ceramic Printing



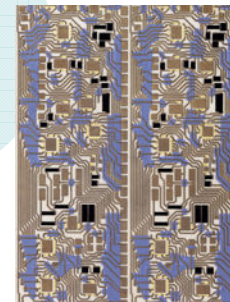
### Screen Printing Frames



### Solar Technology



### Electrical Screen Printing





## Used in most Industries throughout the World



**Textiles**



**Shoes, Clothings**

**Process Industry**

**Precision Mechanics**



**Petrochemicals**

**Paper, Wood**

**Medical Science**

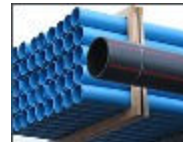


**Air, Space Travel**



**Food, Beverage**

**Plastics**



**Agriculture**

**Environmental Tech.**



**Machinery, Equipment**



**Architecture, Design**

**Automotive, Car Building**

**Mining, raw material extraction**



**Chemical, Pharmaceuticals,  
Biotechnology**



**Hydraulics**

**Energy Tech.**

**Elektronics**

**Glass/Ceramics**

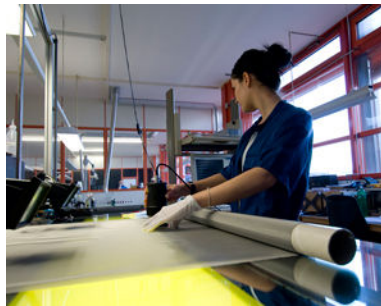


## Practice-oriented Services (1)



### Customized Weaves

- Different Materials
- Material Combinations
- Types of Weaves
- Size of Rolls
- Surface Treatment



### Consulting

- Selection of Material
- Selection of Weave-Type
- Selection of Mesh-Type
- Specifications of Components
- Economic Efficiency



## Practice-oriented Services (2)



### Fabrication

- Cutting, Stamping, Down-Drawing
- Welding, Edge Binding, Plastic Coating
- Spare Parts Service, Assembling
- Surface Treatment
- Volume and Batch Production, Prototyp Prod.



### Logistics

- Computer Controlled Warehousing (Kardex)
- Consignation Stock
- Professional Packing Facilities
- On Schedul Delivery
- Economic Transport-Organisation

## **BOPP – prepared for the Future**

### **Investments over the last 5 Years**

- 2004/5 Opening of BOPP Asia (Korea und China)
- 2006 BOPP Italia, Move into a new Building
- 2006 Takeover of the Reseller Utildi, Sweden
- 2007 Moving into the new Headquarter in Zurich-Affoltern
- 2007 Opening of a new Weaving Hall in Wolfhalden
- 2008 Enlargement-Project for BOPPMESH UK
- 2008/9 Extension of the Weaving-Plant in Wolfhalden

### **Actual Projects**

- Enhancement of Weaving-Technology
- Development of new Applications
- Improvement of Quality, Increase of Automatisatation

## **BOPP – Swiss Quality since 1881**

G. BOPP + CO. AG  
Bachmannweg 21  
CH-8046 Zurich  
Switzerland

Phone     +41 (0)44 377 66 66  
Fax        +41 (0)44 377 66 77

Mail        [info@bopp.com](mailto:info@bopp.com)  
Web         [www.bopp.ch](http://www.bopp.ch)

